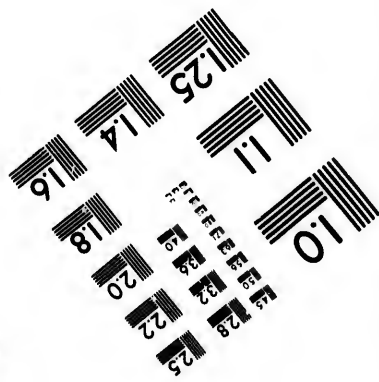
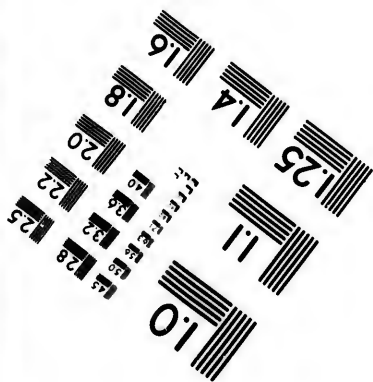
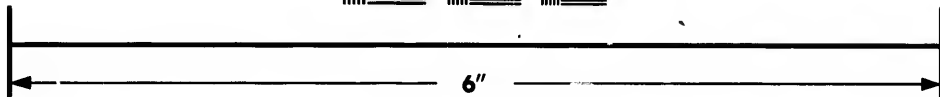
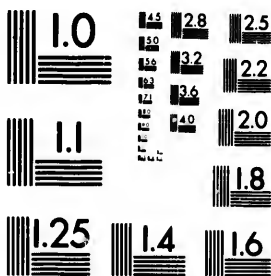


**IMAGE EVALUATION
TEST TARGET (MT-3)**



**Photographic
Sciences
Corporation**

23 WEST MAIN STREET
WEBSTER, N.Y. 14580
(716) 872-4503

1.8
2.0
2.2
2.5
2.8
3.2
3.6
4.0

**CIHM/ICMH
Microfiche
Series.**

**CIHM/ICMH
Collection de
microfiches.**



Canadian Institute for Historical Microreproductions / Institut canadien de microreproductions historiques

10
01

© 1981

Technical and Bibliographic Notes/Notes techniques et bibliographiques

The Institute has attempted to obtain the best original copy available for filming. Features of this copy which may be bibliographically unique, which may alter any of the images in the reproduction, or which may significantly change the usual method of filming, are checked below.

L'Institut a microfilmé le meilleur exemplaire qu'il lui a été possible de se procurer. Les détails de cet exemplaire qui sont peut-être uniques du point de vue bibliographique, qui peuvent modifier une image reproduite, ou qui peuvent exiger une modification dans la méthode normale de filmage sont indiqués ci-dessous.

- Coloured covers/
Couverture de couleur
- Covers damaged/
Couverture endommagée
- Covers restored and/or laminated/
Couverture restaurée et/ou pelliculée
- Cover title missing/
Le titre de couverture manque
- Coloured maps/
Cartes géographiques en couleur
- Coloured ink (i.e. other than blue or black)/
Encre de couleur (i.e. autre que bleue ou noire)
- Coloured plates and/or illustrations/
Planches et/ou illustrations en couleur
- Bound with other material/
Relié avec d'autres documents
- Tight binding may cause shadows or distortion
along interior margin/
La reliure serrée peut causer de l'ombre ou de la
distortion le long de la marge intérieure
- Blank leaves added during restoration may
appear within the text. Whenever possible, these
have been omitted from filming/
Il se peut que certaines pages blanches ajoutées
lors d'une restauration apparaissent dans le texte,
mais, lorsque cela était possible, ces pages n'ont
pas été filmées.
- Additional comments:/
Commentaires supplémentaires:

- Coloured pages/
Pages de couleur
- Pages damaged/
Pages endommagées
- Pages restored and/or laminated/
Pages restaurées et/ou pelliculées
- Pages discoloured, stained or foxed/
Pages décolorées, tachetées ou piquées
- Pages detached/
Pages détachées
- Showthrough/
Transparence
- Quality of print varies/
Qualité inégale de l'impression
- Includes supplementary material/
Comprend du matériel supplémentaire
- Only edition available/
Seule édition disponible
- Pages wholly or partially obscured by errata
slips, tissues, etc., have been refilmed to
ensure the best possible image/
Les pages totalement ou partiellement
obscurcies par un feuillet d'errata, une pelure,
etc., ont été filmées à nouveau de façon à
obtenir la meilleure image possible.

This item is filmed at the reduction ratio checked below/
Ce document est filmé au taux de réduction indiqué ci-dessous.

10X	14X	18X	22X	26X	30X
<input type="checkbox"/>	<input type="checkbox"/>	<input type="checkbox"/>	<input type="checkbox"/>	<input type="checkbox"/>	<input checked="" type="checkbox"/>
12X	16X	20X	24X	28X	32X

The copy filmed here has been reproduced thanks to the generosity of:

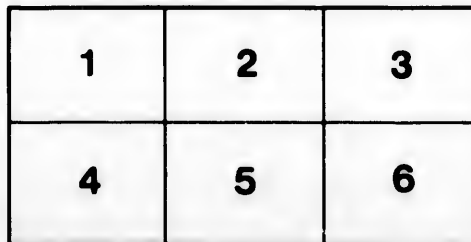
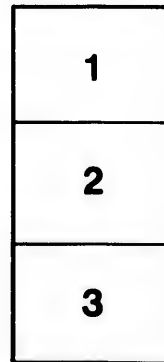
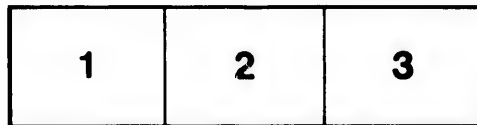
Library Division
Provincial Archives of British Columbia

The images appearing here are the best quality possible considering the condition and legibility of the original copy and in keeping with the filming contract specifications.

Original copies in printed paper covers are filmed beginning with the front cover and ending on the last page with a printed or illustrated impression, or the back cover when appropriate. All other original copies are filmed beginning on the first page with a printed or illustrated impression, and ending on the last page with a printed or illustrated impression.

The last recorded frame on each microfiche shall contain the symbol \rightarrow (meaning "CONTINUED"), or the symbol ∇ (meaning "END"), whichever applies.

Maps, plates, charts, etc., may be filmed at different reduction ratios. Those too large to be entirely included in one exposure are filmed beginning in the upper left hand corner, left to right and top to bottom, as many frames as required. The following diagrams illustrate the method:



L'exemplaire filmé fut reproduit grâce à la générosité de:

Library Division
Provincial Archives of British Columbia

Les images suivantes ont été reproduites avec le plus grand soin, compte tenu de la condition et de la netteté de l'exemplaire filmé, et en conformité avec les conditions du contrat de filmage.

Les exemplaires originaux dont la couverture en papier est imprimée sont filmés en commençant par le premier plat et en terminant soit par la dernière page qui comporte une empreinte d'impression ou d'illustration, soit par le second plat, selon le cas. Tous les autres exemplaires originaux sont filmés en commençant par la première page qui comporte une empreinte d'impression ou d'illustration et en terminant par la dernière page qui comporte une telle empreinte.

Un des symboles suivants apparaîtra sur la dernière image de chaque microfiche, selon le cas: le symbole \rightarrow signifie "A SUIVRE", le symbole ∇ signifie "FIN".

Les cartes, planches, tableaux, etc., peuvent être filmés à des taux de réduction différents. Lorsque le document est trop grand pour être reproduit en un seul cliché, il est filmé à partir de l'angle supérieur gauche, de gauche à droite, et de haut en bas, en prenant le nombre d'images nécessaire. Les diagrammes suivants illustrent la méthode.

ails
du
difler
une
nage

rrata
o

pelure,
n à

32X

24
52m

MESSAGE.

No. 1.

FREDERICK SEYMOUR.

In compliance with the Resolution of the Legislative Council, the Governor lays before the Board a copy of such portions of Her Majesty's Instructions to him as refer to the Constitution of the Colony and the construction of the Legislative Council.

It was decided, in another Colony with which the Governor was connected, that the House of Assembly was not entitled as of right to be put in possession of the Royal Instructions. The Governor will not however throw any impediment in the way of the Council during the present difficult Session.

*Government House,
2nd February, 1867.*

ENCLOSURE IN THE GOVERNOR'S MESSAGE, NO. 1, TO THE LEGISLATIVE COUNCIL.

Extract from the Royal Instructions.

Eleventh.—And whereas by an Order in Council, bearing date the 11th day of June, 1863, we did constitute a Legislative Council, and did empower the Governor of our said Colony with the advice of our said Council, to make Laws for the Peace, Order, and Good Government of our said Colony, and did declare that until otherwise provided by us, the said Council should, in the Transactions of Business and Passing of Laws conform as nearly as might be to the Directions conveyed in certain Instructions therein mentioned, and bearing date the second day of September, 1858, and to such further Instructions under our Sign Manual and Signet as might hereafter be addressed to the Governor of our said Colony in that behalf; and we did further declare that, subject to such Instructions, the said Council might make Standing Rules and Orders for the Regulations of their own Proceedings; and whereas by our Letters Patent of even date herewith, we have revealed our said Instructions of the second day of September, 1858, we do further Direct and Require you to frame and propose to the said Council for their adoption, such Standing Rules and Orders as may be necessary to ensure punctuality of Attendance of the Members of the said Council, and to prevent Meetings of the said Council being holden without convenient Notice to the several Members thereof, and to maintain Order and Method in the dispatch of Business, and in the conduct of all Debates in the said Council, and to secure due deliberation in the passing of Laws, and to provide that, before the passing of any Law intended to affect the Interests of private persons, due notice of the same is given to all Persons concerned therein, all which Rules and Orders, not being repugnant to the said Order in Council, or to your said Commission, or to these our Instructions, or to any other Instructions which you may receive from us, shall at all times be followed and observed, and shall be binding upon the said Council, unless the same, or any of them shall be disallowed by us.

Twelfth.—And we do further Direct that all Laws to be enacted by you with the Advice and Consent of the said Council, shall henceforth be styled "Ordinances enacted by the Governor of "British Columbia, with the Advice and Consent of the Legislative Council thereof;" and that no other style or Form shall ever henceforth be observed in any such enactments.

Thirteenth.—And we do further Direct that all Ordinances made by you with the Advice of the said Council be Distinguished by Titles, and that the Ordinances of each year be also Distinguished by Numerical Marks, commencing in each successive year with the number One, and proceeding in arithmetical progression to the number corresponding with the total number of Ordinances enacted during the year, and that every such Ordinance be divided into successive Clauses or Paragraphs, and numbered in the margin of the said Ordinance, and that to every such Clause be annexed, in the margin, a brief summary of its contents.

Fourteenth.—And we do further Direct that all such Ordinances be drawn up in a simple and Compendious Form, and that subjects which have no proper relation to each other be not comprised in one and the same Ordinance. And that no Enactments be introduced into any such Ordinance which may be Foreign to its professed scope and object, and that no Perpetual Clause be part of any Temporary Ordinance.

Fifteenth.—And we do further Direct that you do not propose or assent to any Ordinance whatever in relation to any of the matters mentioned or referred to in the said Order in Council, or in your said Commission, or in those our Instructions, which shall be in anywise repugnant to or inconsistent with such Order in Council, or Commission, or Instructions.

